

Rally Gateway™ Media Submission and Management Portal for Content Suppliers

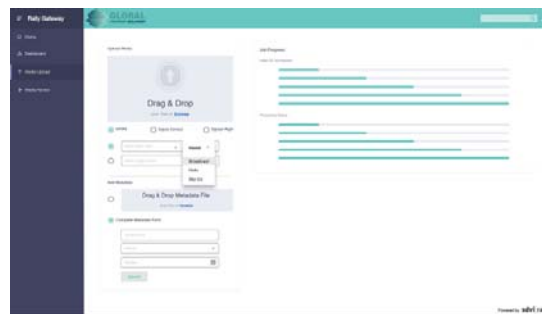
Practically every media organization in the world receives content from multiple internal and external producers, in different formats, with different metadata, at different rates. This inherently puts the emphasis on organizing, analyzing, validating and normalizing the content on to the receiving organization. When multiplied by tens (or even hundreds) of producers, each delivering large volumes of content (sometimes multiple seasons at the same time), this represents a large, complex, manually intensive process.

Rally Gateway allows you to publish media portals for any group of users, and control the functionality they can access using Rally widgets. Rally Gateway supports configurations from a single branded portal for all producers, to multiple branded portals for each production company.

As a Rally user, you can create, configure and modify Gateway portals which are automatically published in real-time. Selecting colors, logos, layouts and permissions, the portal will present only what you want and only to users you choose. Through a combination of pages & widgets, you can build Gateway portals to support multiple use cases within your supply chain.

Media Contribution Portal

You'd like an external content production company to be able to deliver content to you, automatically review it, verify it, fix it if needed, and let them know it's been accepted or rejected without any manual intervention. Rally Gateway lets you determine accepted formats, define the metadata delivery requirements, and automatically enters content in to the required supply chain to ready it for distribution.



Rally Gateway showing the upload and metadata entry widgets.



Rally Gateway Features

- Automate content and metadata submissions
- Extends media supply chain efficiencies to third-party suppliers
- Each supplier can have their own branded portal with unique permissions and settings
- Widgets provide easy-to-configure, tools for each portal with no programming needed
- Integrates supply chain workorders into third-party content submission and validation
- Provides status reports and real-time dashboards for content in progress and completed jobs
- Built-in, pre-defined layouts for QC, compliance verification, segment timing, and simple edit

SDVI Rally powers the media supply chains of some of the biggest names in media, including



Rally Gateway™

Work Order Review

You have an automated supply chain but have content that requires manual review when exceptions are met in the automated process. And you need to ensure that content automatically rejoins the supply chain and routes appropriately when the review is complete. Simply add a page to your Gateway portal with the workorder widget, and users will automatically be informed when they have tasks to do. Complete the task, and the content continues on its automated path.

Media Status Dashboards

You want to provide media processing status to a group of users? They may be an internal or external group, but need to know where content is in the supply chain, and when it is expected to be complete. Rally Gateway provides widgets for job status, content status, and estimated time of completion – simply build a page in a Gateway portal, define who you'd like to have access, and then add the desired widgets.

Content Review & Approval

Following a legal compliance edit to make content suitable for distribution to a particular platform, the producer needs to review and approve the changes, but the content is still in the cloud. Simply add a review & approval widget to a Gateway portal page, and route the review to the desired user as a workorder. The producer can review the changes, comment & approve, and the content automatically continues its path to distribution.

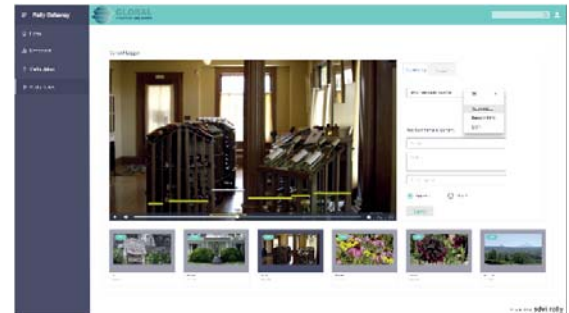
Metadata Review & Logging

As content goes through a supply chain, an enormous amount of metadata can be generated. Automated QC processes, AI content analysis, technical metadata – all generate valuable time-based metadata that can aid manual content processes. In Rally Gateway, the Logging widget provides direct access to all this metadata, overlaid on proxy video, directly in a browser. Unlock the power of your metadata to optimize your content supply chains.

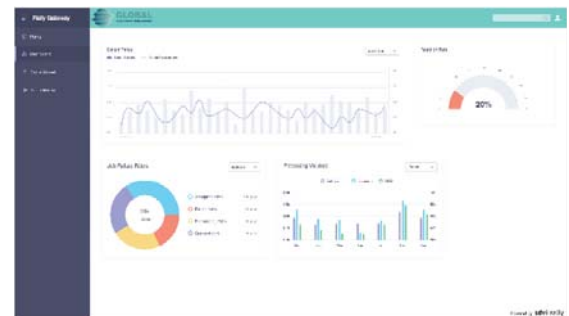
Job Monitoring

In the old world of content submission, content would be delivered, and the producer would hear nothing more, until likely at the last minute before air an issue would be found and a panic would ensue. With Rally Gateway, job status, acceptance status, supply chain status and even custom QC reports can all be made available to producers automatically via their portal, ensuring content doesn't get stuck somewhere, and everyone has visibility of where and when it needs to be ready. With the collection of widgets available, and more continuously being added, Rally Gateway provides the gateway to your supply chain, the gateway to your content, and a gateway to the cloud.

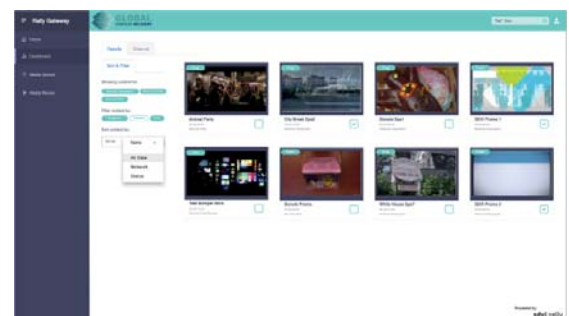
Rally Gateway functionality is built in to every SDVI Rally system, providing the power to add, edit and remove custom portals on the fly. In addition to the admin interface and the Gateway portals themselves, Rally Gateway includes a Widgets JavaScript SDK, so you can use the widgets to embed Rally capability in your own applications.



The content logger widget in Rally Gateway.



Typical content dashboard built using a selection of Rally Gateway widgets.



Content search results in Rally Gateway.

SDVI Rally™ is a registered trademark of SDVI Corporation. Rally Access™ and Rally Gateway™ are trademarks of SDVI Corporation. All other trademarks used herein are the property of the respective owners.

For more information, visit www.sdvi.com, email info@sdvi.com, or contact us via Facebook or Twitter: [@sdvicorp](https://twitter.com/sdvicorp)